

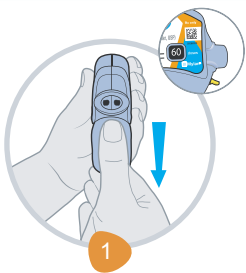


## HOW TO USE WIXELA INHUB®

**Wixela Inhub** was designed with patients in mind to help you make a seamless transition from ADVAIR DISKUS® (fluticasone propionate and salmeterol inhalation powder).

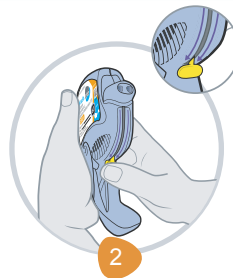
Take Wixela Inhub out of the foil pouch just before you use it for the first time. Write the "Pouch opened" and "Use by" dates on the label. The "Use by" date is one month from the date you open the pouch for your first dose.

### Follow the 5 steps below each time you take a dose.



#### Open your INHUB

- Hold the INHUB in one hand and with your other hand on the grip **lower** the mouthpiece cover from top to bottom.

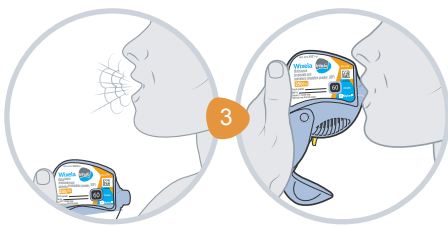


#### Push down the lever.

- Hold the INHUB in the **vertical** position. Push the yellow lever down to the end of the purple arrows (you may hear a click).
- The INHUB is now ready to use.

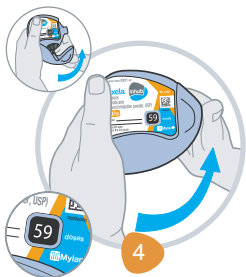
Follow the instructions below so you will not accidentally waste a dose:

- **Do not** close the INHUB.
- **Do not** move the lever on the INHUB once pushed down.



#### Inhale your medicine.

- Before you breathe in your dose from the INHUB, breathe out (exhale) as long as you can while you hold the INHUB away from your mouth. Do not breathe into the mouthpiece.
- Put the mouthpiece to your lips. Breathe in quickly and deeply through the INHUB. Do not breathe in through your nose.
- Remove the INHUB from your mouth and **hold your breath for about 10 seconds**, or for as long as is comfortable for you.
- **Breathe out slowly for as long as you can.**
- The INHUB delivers your dose of medicine as a very fine powder that you may or may not taste or feel. **Do not** take an extra dose from the INHUB even if you do not taste or feel the medicine.



#### Close the INHUB

- Push the mouthpiece cover up to the closed position, this will automatically return the yellow lever to the start position. Make sure the INHUB is shut and you cannot see the mouthpiece.
- The dose counter will count down one dose as you close the mouthpiece cover. This will now tell you how many doses are left.
- The INHUB is now ready for you to take your next scheduled dose in about 12 hours.
- **When you are ready to take your next dose, repeat Steps 1 through 4.**



#### Rinse your mouth

- **Rinse your mouth with water after breathing in the medicine.** Spit out the water. **Do not** swallow it.

### Indications

WIXELA INHUB is a twice-daily prescription medicine used to control symptoms of asthma and to prevent symptoms such as wheezing in patients 4 years and older. WIXELA INHUB is for adults and children with asthma who are not well controlled with an asthma control medicine, such as an inhaled corticosteroid (ICS) medicine and need both an ICS and long-acting beta<sub>2</sub>-adrenergic agonist (LABA) medicine.

WIXELA INHUB 250/50 is a twice-daily prescription medicine used long term to treat chronic obstructive pulmonary disease (COPD), including chronic bronchitis, emphysema, or both, for better breathing and fewer flare-ups.

**Important Limitation of Use:** WIXELA INHUB is not used to relieve sudden breathing problems from asthma or COPD and won't replace a rescue inhaler.

Please see additional Important Safety Information on next page. Please see accompanying full Prescribing Information and Patient Information for full Instructions for Use.

When using your **Wixela Inhub®** please be aware of these important components



Dose counter

Mouthpiece

Yellow lever

Air vents

Mouthpiece cover

Grip

## DOSE COUNTER



Your dose counter will be set at **60** when you first receive your INHUB.



After you have taken 51 doses, a red indicator will be present. This indicator warns you there are **9** or fewer doses left and is a reminder to get a refill.



The dose counter will read **0** and the lever will not reach the end of the purple arrows when there are no doses remaining.

For more information and to watch the How to Use video, visit [www.wixela.com](http://www.wixela.com)

### Important Safety Information

- WIXELA INHUB contains salmeterol, the same medicine found in SEREVENT® (salmeterol xinafoate inhalation powder). LABA medicines such as salmeterol when used alone increase the risk of hospitalizations and death from asthma problems. WIXELA INHUB contains an ICS and a LABA. When an ICS and LABA are used together, there is not a significant increased risk in hospitalizations and death from asthma problems.
- **Do not use WIXELA INHUB to treat sudden breathing problems from asthma or COPD.** Always have a rescue inhaler with you to treat sudden symptoms.
- **Do not use WIXELA INHUB** if you have a severe allergy to milk proteins. **Do not use WIXELA INHUB** if you are allergic to any of the ingredients in the products. Ask your healthcare provider if you are not sure.
- **Do not use WIXELA INHUB** more often than prescribed.
- **Do not take WIXELA INHUB with other medicines that contain a LABA for any reason.**
- **Tell your healthcare provider about all the medicines you take and about all of your health conditions.**
- **Common side effects of WIXELA INHUB for asthma include** upper respiratory tract infection, throat irritation, hoarseness and voice changes, thrush in your mouth or throat, bronchitis, cough, headache, and nausea and vomiting. In children with asthma, infections in the ear, nose, and throat are common.
- **Common side effects of WIXELA INHUB for COPD include** thrush in your mouth or throat, throat irritation, hoarseness and voice changes, viral respiratory infections, headache, and muscle and bone pain.

**Please see accompanying full Prescribing Information and Patient Information for full Instructions for Use.**

For additional information please contact us at 800-395-3376.

You are encouraged to report negative side effects of prescription drugs to the FDA. Visit [www.fda.gov/medwatch](http://www.fda.gov/medwatch) or call 1-800-FDA-1088.

WIXELA INHUB is a registered trademark of Mylan Pharmaceuticals Inc., a Viatrix Company.  
ADVAIR DISKUS and SEREVENT are registered trademarks of the GSK group of companies.  
VIATRIS and the Viatrix Logo are trademarks of Mylan Inc., a Viatrix Company.  
© 2021 Viatrix Inc. All Rights Reserved. WIX-2020-0047 V4

