

**Wixela Inhub** is the first  
FDA-approved generic  
version of **ADVAIR DISKUS<sup>®</sup>**  
(fluticasone propionate and  
salmeterol inhalation  
powder) for appropriate  
patients with asthma or  
**COPD**



Ask your doctor or pharmacist about **Wixela Inhub**, the first generic version of ADVAIR DISKUS. Visit [wixela.com](http://wixela.com)

### Indications

WIXELA INHUB is a twice-daily prescription medicine used to control symptoms of asthma and to prevent symptoms such as wheezing in patients 4 years and older. WIXELA INHUB is for adults and children with asthma who are not well controlled with an asthma control medicine, such as an inhaled corticosteroid (ICS) medicine and need both an ICS and long-acting beta<sub>2</sub>-adrenergic agonist (LABA) medicine.

WIXELA INHUB 250/50 is a twice-daily prescription medicine used long term to treat chronic obstructive pulmonary disease (COPD), including chronic bronchitis, emphysema, or both, for better breathing and fewer flare-ups.

**Important Limitation of Use:** WIXELA INHUB is not used to relieve sudden breathing problems from asthma or COPD and won't replace a rescue inhaler.

### Important Safety Information

- WIXELA INHUB contains salmeterol, the same medicine found in SEREVENT<sup>®</sup> (salmeterol xinafoate inhalation powder). LABA medicines such as salmeterol when used alone increase the risk of hospitalizations and death from asthma problems. WIXELA INHUB contains an ICS and a LABA. When an ICS and LABA are used together, there is not a significant increased risk in hospitalizations and death from asthma problems.
- **Do not use WIXELA INHUB to treat sudden breathing problems from asthma or COPD.** Always have a rescue inhaler with you to treat sudden symptoms.
- **Do not use WIXELA INHUB** if you have a severe allergy to milk proteins. **Do not use WIXELA INHUB** if you are allergic to any of the ingredients in the products. Ask your healthcare provider if you are not sure.

Click here for [Important Safety Information](#)

Click here for full [Prescribing Information](#) and [Patient Information](#)



# Designed to help enable a seamless transition



When you receive **Wixela Inhub**® at the pharmacy, you may notice that the device looks different from your current inhaler. **Wixela Inhub** contains the same medication as ADVAIR DISKUS® (fluticasone propionate and salmeterol inhalation powder), with similar steps for use.



**SIMILAR STEPS AS ADVAIR DISKUS**

**LARGE DOSE COUNTER WINDOW**

HELPS YOU KEEP TRACK OF HOW MANY DOSES ARE LEFT

**LEVER WITH AUDIBLE CLICK**

HELPS ENSURE YOU RECEIVE THE RIGHT DOSE EACH TIME

**TWICE-DAILY DOSING**



Before you take your first dose, review the [Patient Information](#) and talk to your doctor or pharmacist about any questions you may have.



For step-by-step instructions on how to use the **Wixela Inhub**, watch the how-to-use video at [www.wixela.com](http://www.wixela.com)

## Important Safety Information (Continued)

- **Do not use** WIXELA INHUB more often than prescribed.
- **Do not take** WIXELA INHUB with other medicines that contain a LABA for any reason.
- **Tell your healthcare provider about all the medicines you take and about all of your health conditions.**
- Call your healthcare provider or get medical care right away if your breathing problems get worse, if you need your rescue inhaler more often than usual or it does not work as well to relieve your symptoms, or if your peak flow meter results decrease. Your healthcare provider will tell you the numbers that are right for you.
- WIXELA INHUB **can cause serious side effects, including:**
- **Fungal infection in your mouth or throat (thrush).** Rinse your mouth with water without swallowing after using WIXELA INHUB to help reduce your chance of getting thrush.

[Click here for Important Safety Information](#)

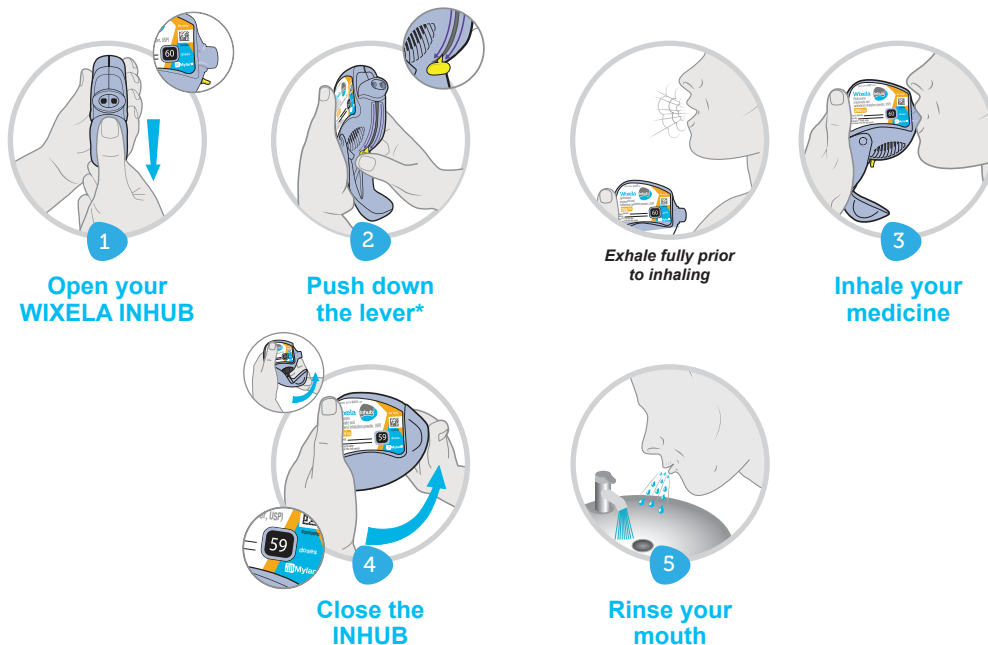
[Click here for full Prescribing Information and Patient Information](#)



**VIATRIS**™

## Wixela Inhub

**Wixela Inhub** was designed with patients in mind to help you make a seamless transition from ADVAIR DISKUS®. The steps for using Wixela Inhub are similar to those for ADVAIR DISKUS:



\*Hold the Inhub in the vertical position. For detailed instructions on the steps to using Wixela Inhub, please see Instructions for Use.

## Dosing Strengths:

Only the 250/50 mcg strength is indicated for COPD

**Wixela Inhub** is a generic dry powder inhaler that is available in the same 3 dosage strengths as ADVAIR DISKUS. Your doctor will choose the dose that is right for you



## Important Safety Information (Continued)

- **Pneumonia.** People with COPD have a higher chance of getting pneumonia. WIXELA INHUB may increase the chance of getting pneumonia. Call your healthcare provider if you notice any of the following symptoms: increase in mucus (sputum) production; change in mucus color; fever; chills; increased cough; increased breathing problems.

[Click here for Important Safety Information](#)

[Click here for full Prescribing Information and Patient Information](#)





## Helping improve lung function all day for appropriate asthma or COPD patients

The active ingredients of **Wixela Inhub** and ADVAIR DISKUS® are the same, and have been demonstrated in clinical studies to help improve lung function all day so appropriate asthma or COPD patients can breathe better. As an FDA-approved generic of ADVAIR DISKUS, you can expect **Wixela Inhub** to be just as effective and safe.

**Wixela Inhub** is the result of a rigorous 10-year research and development program. To learn more about the company behind your medication, visit [www.viatris.com](http://www.viatris.com).

### Important Safety Information (Continued)

- **Weakened immune system and increased chance of getting infections (immunosuppression).** You should avoid exposure to chickenpox and measles, and, if exposed, tell your healthcare provider right away. Worsening of existing tuberculosis, fungal, bacterial, viral, or parasitic infections, or herpes infection of the eye (ocular herpes simplex) may occur.
- **Reduced adrenal function.** This can happen when you stop taking an oral corticosteroid (such as prednisone) and start taking a medicine containing an inhaled corticosteroid (such as WIXELA INHUB). During this transition period, when your body is under stress such as from fever, trauma (such as a car accident), infection, surgery, or worse COPD symptoms, adrenal insufficiency can get worse and may cause death. Symptoms of adrenal insufficiency include: feeling tired; lack of energy; weakness; nausea and vomiting; low blood pressure (hypotension).
- **Sudden breathing problems immediately after inhaling your medicine.** If you have sudden breathing problems immediately after inhaling your medicine, stop using WIXELA INHUB and call your healthcare provider right away.
- **Serious allergic reactions.** Call your healthcare provider or get emergency medical care if you get any of the following symptoms of a serious allergic reaction: rash; hives; swelling of your face, mouth, and tongue; breathing problems.
- **Effects on heart:** increased blood pressure; a fast or irregular heartbeat; chest pain.
- **Effects on nervous system:** tremor; nervousness.
- **Bone thinning or weakness (osteoporosis).**
- **Slowed growth in children.** A child's growth should be checked regularly by the healthcare provider.

[Click here for Important Safety Information](#)

[Click here for full Prescribing Information and Patient Information](#)



**VIATRIS™**



Ask your doctor or pharmacist about **Wixela Inhub** — a generic option for appropriate patients with asthma or COPD that may reduce the cost of treatment.\*



The first generic version of ADVAIR DISKUS® with similar steps for use

Expected to be as effective and safe as ADVAIR DISKUS

Brought to you by VIATRIS™, a company committed to respiratory health

\*The final cost for patients will be determined by their healthcare insurance coverage.

### Important Safety Information (Continued)

- **Eye problems including glaucoma, increased pressure in your eye, cataracts, or other changes in vision.** You should have regular eye exams while using WIXELA INHUB.
- **Changes in laboratory blood values (sugar, potassium, certain types of white blood cells).**
- **Common side effects of WIXELA INHUB for asthma include** upper respiratory tract infection, throat irritation, hoarseness and voice changes, thrush in your mouth or throat, bronchitis, cough, headache, and nausea and vomiting. In children with asthma, infections in the ear, nose, and throat are common.
- **Common side effects of WIXELA INHUB for COPD include thrush** in your mouth or throat, throat irritation, hoarseness and voice changes, viral respiratory infections, headache, and muscle and bone pain.

[Click here for Important Safety Information](#)  
[Click here for full Prescribing Information and Patient Information](#)

## Indications

WIXELA INHUB is a twice-daily prescription medicine used to control symptoms of asthma and to prevent symptoms such as wheezing in patients 4 years and older. WIXELA INHUB is for adults and children with asthma who are not well controlled with an asthma control medicine, such as an inhaled corticosteroid (ICS) medicine and need both an ICS and long-acting beta<sub>2</sub>-adrenergic agonist (LABA) medicine.

WIXELA INHUB 250/50 is a twice-daily prescription medicine used long term to treat chronic obstructive pulmonary disease (COPD), including chronic bronchitis, emphysema, or both, for better breathing and fewer flare-ups.

**Important Limitation of Use:** WIXELA INHUB is not used to relieve sudden breathing problems from asthma or COPD and won't replace a rescue inhaler.

## Important Safety Information for WIXELA INHUB

- WIXELA INHUB contains salmeterol, the same medicine found in SEREVENT® (salmeterol xinafoate inhalation powder). LABA medicines such as salmeterol when used alone increase the risk of hospitalizations and death from asthma problems. WIXELA INHUB contains an ICS and a LABA. When an ICS and LABA are used together, there is not a significant increased risk in hospitalizations and death from asthma problems.
- **Do not use WIXELA INHUB to treat sudden breathing problems from asthma or COPD.** Always have a rescue inhaler with you to treat sudden symptoms.
- **Do not use WIXELA INHUB** if you have a severe allergy to milk proteins. **Do not use WIXELA INHUB** if you are allergic to any of the ingredients in the products. Ask your healthcare provider if you are not sure.
- **Do not use WIXELA INHUB** more often than prescribed.
- **Do not take WIXELA INHUB with other medicines that contain a LABA for any reason.**
- **Tell your healthcare provider about all the medicines you take and about all of your health conditions.**
- Call your healthcare provider or get medical care right away if your breathing problems get worse, if you need your rescue inhaler more often than usual or it does not work as well to relieve your symptoms, or if your peak flow meter results decrease. Your healthcare provider will tell you the numbers that are right for you.
- WIXELA INHUB can cause serious side effects, including:
  - **Fungal infection in your mouth or throat (thrush).** Rinse your mouth with water without swallowing after using WIXELA INHUB to help reduce your chance of getting thrush.
  - **Pneumonia.** People with COPD have a higher chance of getting pneumonia. WIXELA INHUB may increase the chance of getting pneumonia. Call your healthcare provider if you notice any of the following symptoms: increase in mucus (sputum) production; change in mucus color; fever; chills; increased cough; increased breathing problems.
- **Weakened immune system and increased chance of getting infections (immunosuppression).** You should avoid exposure to chickenpox and measles, and, if exposed, tell your healthcare provider right away. Worsening of existing tuberculosis, fungal, bacterial, viral, or parasitic infections, or herpes infection of the eye (ocular herpes simplex) may occur.
- **Reduced adrenal function.** This can happen when you stop taking an oral corticosteroid (such as prednisone) and start taking a medicine containing an inhaled corticosteroid (such as WIXELA INHUB). During this transition period, when your body is under stress such as from fever, trauma (such as a car accident), infection, surgery, or worse COPD symptoms, adrenal insufficiency can get worse and may cause death. Symptoms of adrenal insufficiency include: feeling tired; lack of energy; weakness; nausea and vomiting; low blood pressure (hypotension).
- **Sudden breathing problems immediately after inhaling your medicine.** If you have sudden breathing problems immediately after inhaling your medicine, stop using WIXELA INHUB and call your healthcare provider right away.
- **Serious allergic reactions.** Call your healthcare provider or get emergency medical care if you get any of the following symptoms of a serious allergic reaction: rash; hives; swelling of your face, mouth, and tongue; breathing problems.
- **Effects on heart:** increased blood pressure; a fast or irregular heartbeat; chest pain.
- **Effects on nervous system:** tremor; nervousness.
- **Bone thinning or weakness (osteoporosis).**
- **Slowed growth in children.** A child's growth should be checked regularly by the healthcare provider.
- **Eye problems including glaucoma, increased pressure in your eye, cataracts, or other changes in vision.** You should have regular eye exams while using WIXELA INHUB.
- **Changes in laboratory blood values (sugar, potassium, certain types of white blood cells).**
- **Common side effects of WIXELA INHUB for asthma include** upper respiratory tract infection, throat irritation, hoarseness and voice changes, thrush in your mouth or throat, bronchitis, cough, headache, and nausea and vomiting. In children with asthma, infections in the ear, nose, and throat are common.
- **Common side effects of WIXELA INHUB for COPD include thrush** in your mouth or throat, throat irritation, hoarseness and voice changes, viral respiratory infections, headache, and muscle and bone pain.

You are encouraged to report negative side effects of prescription drugs to the FDA. Visit [www.fda.gov/medwatch](http://www.fda.gov/medwatch), or call 1-800-FDA-1088.

[Click here for full Prescribing Information and Patient Information](#)

Visit [www.wixela.com](http://www.wixela.com) for more information.

WIXELA INHUB is a registered trademark of Mylan Pharmaceuticals Inc., a Viatris Company. ADVAIR DISKUS and SEREVENT are registered trademarks of the GSK group of companies. VIATRIS and the Viatris Logo are trademarks of Mylan Inc., a Viatris Company. © 2021 Viatris Inc. All Rights Reserved. WIX-2019-0035 V3



VIATRIS™